



**M**  
Manual  
Torque Multiplier

**alkitronic<sup>®</sup>**

## Applications

- *alkitronic*® M hand torque multiplier - for energy independent precise tightening and loosening of heavy-duty bolt connections.
- Torques from 200 Nm up to 50,000 Nm.
- The ideal torque tool in high explosion-risk areas
- *alkitronic*® M provide safe, economic, problem-free operation. They replace impact wrenches, pipe extensions and other inadequate methods.

## Advantages

- Maintenance-free, compact and robust design. They improve on-the-job safety and have short assembly times.
- Low energy input - high torque transfer.
- Integrated anti wind-up ratchet allows jobs to be performed easily, efficiently and safely.

## alkitronic® specials

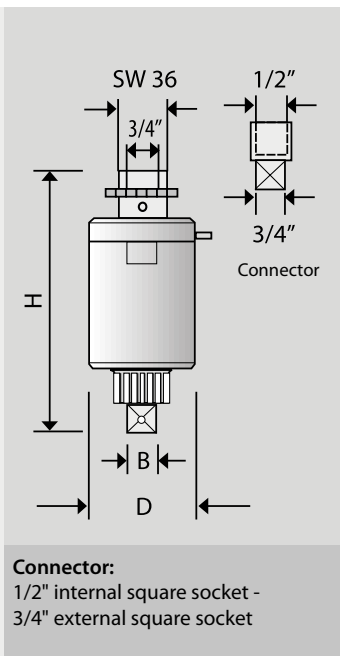
- The components of the *alkitronic*® power gears are manufactured using a high-precision chipless process - in order to ensure the highest possible operational demands with lowest wear.
- The shearing pin built into the drive shaft protects against input overload.



Technical Data: Modell *H* (without ratchet) and *HG* (with ratchet)

Type		H10	H15	HG10	HG15	HG20	HG30	HG40	HG50	HG60	HG80
Torque up to (approx.)*	Nm	1400	1400	1400	1400	3500	5000	6000	8000	11500	50000
Square drive	B	1/2" / 3/4"	1"	1/2" / 3/4"	1"	1"	1 1/2"	1 1/2"	1 1/2"	1 1/2"	2 1/2"
Reduction ratio		4	4	4	4	16	18	20	24	28	180
Diameter	D mm	85	85	85	85	85	98	109	133	173	275
Height	H mm	180	200	180	200	235	250	280	280	290	360
Weight (approx.)	kg	3.5	4	3.5	4	5	6.5	7	12	28	58

\*) When loosening a bolted connection, up to 20% higher torque may be required (loosening torque). We will gladly advise you in detail.



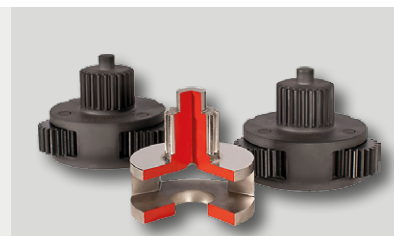
### Specifications

**Torque Multiplier input via:**  
3/4" internal square socket torque wrench or conventional ratchets external hexagonal socket SW 36 mm.

**Handwheel** - for rough turning loose bolts/nuts.

*alkitronic*® manual torque multipliers are supplied with a support foot (DMA) as standard version. For support rings, back stops, ratchets, torque wrenches, and other components, please see our *alkitronic*® catalog of accessories.

alki TECHNIK GmbH reserves the right to change specifications without prior notice.



*alkitronic*® - power gear components



*alkitronic*® M operating on electricity pylons. Accurate tightening via torque wrench.

## alkitronic®

TORQUE POWER WORLDWIDE

*alkitronic*® products  
Made in Germany by

**alki TECHNIK GmbH**  
Development, Production and  
Distribution of Bolting Systems

Unterlettenweg 4  
D-85051 Ingolstadt

fon +49 841 97499-0  
fax +49 841 97499-90

info@alkitronic.com  
www.alkitronic.com